

BALDOR • RELIANCE

Customer information packet

XM32522T

50//40HP, 3540//2945RPM, 3PH, 60//50HZ, 326T

Class - CLI GP D; CLII GP F,G

Division - Division I

Specifications

Enclosure	XPFC
Frame	326TS
Frame Material	Iron
Frequency	50.00 Hz 60.00 Hz
Motor Letter Type	Three Phase
Output @ Frequency	40.000 HP @ 50 HZ 50.000 HP @ 60 HZ
Phase	3
Synchronous Speed @ Frequency	3600 RPM @ 60 HZ
Voltage @ Frequency	380.0 V @ 50 HZ 230.0 V @ 60 HZ 190.0 V @ 50 HZ 460.0 V @ 60 HZ
XP Class and Group	CLI GP D; CLII GP F,G
XP Division	Division I
Agency Approvals	CSA UR CSA EEV
Ambient Temperature	40 °C
Auxillary Box	No Auxillary Box
Auxillary Box Lead Termination	None
Base Indicator	Rigid
Bearing Grease Type	Polyrex EM (-20F +300F)
Blower	None
Constant Torque Speed Range	6
Current @ Voltage	56.000 A @ 460.0 V 55.000 A @ 380.0 V 112.000 A @ 230.0 V 110.000 A @ 190.0 V
Design Code	A
Drip Cover	No Drip Cover

Part detail

Revision	A
Type	AC
Mech. spec.	
Base	
Status	PRD/A
Elec. spec.	12WGA0178
Layout	12LYG783
Eff. date	09-15-2022
CD Diagram	CD0180
Poles	02
Leads	9#8
Proprietary	False
Created date	04-30-2021

Duty Rating	CONT
Efficiency @ 100% Load	93.0 %
Electrically Isolated Bearing	Not Electrically Isolated
Feedback Device	NO FEEDBACK
Heater Indicator	No Heater
High Voltage Full Load Amps	55.0 a
Insulation Class	F
Inverter Code	Inverter Duty
IP Rating	NONE
KVA Code	H
Lifting Lugs	Standard Lifting Lugs
Locked Bearing Indicator	Locked Bearing
Max Speed	5400 rpm
Motor Lead Termination	Flying Leads
Motor Standards	NEMA
Motor Type	1264M
Mounting Arrangement	F1
Number of Poles	2
Overall Length	30.50 IN
Power Factor	90
Product Family	Hazardous Location Motor
Pulley Face Code	Standard
Rodent Screen	None
Service Factor	1.00
Shaft Diameter	1.875 IN
Shaft Ground Indicator	No Shaft Grounding
Shaft Rotation	Reversible
Speed	3540 rpm
Speed Code	Single Speed
Starting Method	Direct on line
Thermal Device - Bearing	None
Thermal Device - Winding	Normally Closed Thermostat
Vibration Sensor Indicator	No Vibration Sensor
Winding Thermal 1	None

Winding Thermal 2

None

XP Temp Code

T3C

Nameplate

NP0887XPSLEV

NO.		CC	010A		
S/N		TEMP CODE	T3C		
SPEC.	12-0000-2157	INV.TYPE	PWM		
CAT.NO.	XM32522T	C HP FR	60	C HP TO	90
HP	50//40	CT HZ FROM	6	CT HZ TO	60
VOLTS	230/460//190/380	VT HZ FROM	6	VT HZ TO	60
AMPS	112/56//110/55	MAG CUR	30/15		
RPM	3540//2945	MX RPM	5400		
HZ	60//50	PH	3	CL	F
		NOM.EFF.	93		
SER.F.	1.00	DES	A	SL HZ	1
				WK2	5.01
FRAME	326TS	RATING	40C AMB-CONT		
	NEMA MG-1 PART 5, IP54				
	1.15 SF ON SINE WAVE				

AC Induction Motor Performance Data

Record # 88101

Typical performance - not guaranteed values

Winding: 12WGA0178-R001		Type: 1264M		Enclosure: XPFC	
Nameplate Data			460 V, 60 Hz: High Voltage Connection		
Rated Output (HP)	50	Full Load Torque	75.06 LB-FT		
Volts	230/460//190/380	Start Configuration	direct on line		
Full Load Amps	112/56//110/55	Breakdown Torque	272 LB-FT		
R.P.M.	3540//2945	Pull-up Torque	80.31 LB-FT		
Hz	60//50 Phase	3	Locked-rotor Torque	108 LB-FT	
NEMA Design Code	A KVA Code	H	Starting Current	367 A	
Service Factor (S.F.)		1	No-load Current	11.91 A	
NEMA Nom. Eff.	93 Power Factor	90	Line-line Res. @ 25°C	0.106 Ω	
Rating - Duty	40C AMB-CONT		Temp. Rise @ Rated Load	59°C	
			Locked-rotor Power Factor	21	
			Rotor inertia	5.01 lb-ft ²	

Load Characteristics 460 V, 60 Hz, 50 HP

% of Rated Load	25	50	75	100	125	150
Power Factor	75	89	92	93	93	93
Efficiency	87.6	92.2	93.3	93.5	93.3	93.1
Speed	3582	3570	3557	3544	3531	3515
Line amperes	18.73	29.41	41.54	54.31	67.65	82.14

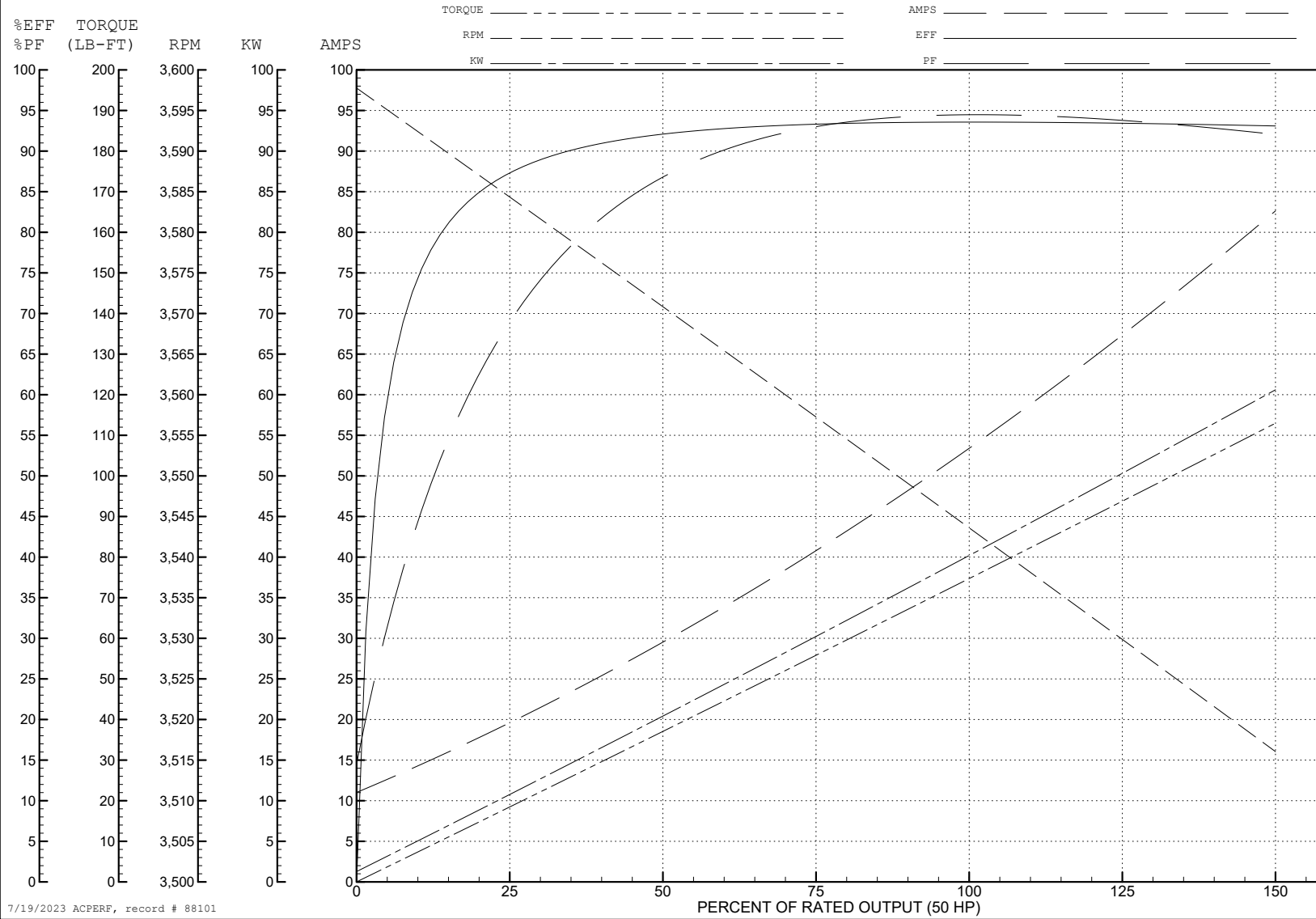
ABB Motors and Mechanical Inc.

WINDING # 12WGA0178

Typical performance - not guaranteed values.

50 HP 3 PH 60 HZ 3544 RPM 460 V 1264M

TORQUES (LB-FT): PO=272 PU=80.31 LR=108 LRA=367



7/19/2023 ACPERF, record # 88101

AC Induction Motor Performance Data

Record # 88103

Typical performance - not guaranteed values

Winding: 12WGA0178-R001		Type: 1264M		Enclosure: XPFC	
Nameplate Data			380 V, 50 Hz: High Voltage Connection		
Rated Output (HP)	50	Full Load Torque	72.25 LB-FT		
Volts	230/460//190/380	Start Configuration	direct on line		
Full Load Amps	112/56//110/55	Breakdown Torque	264 LB-FT		
R.P.M.	3540//2945	Pull-up Torque	85.27 LB-FT		
Hz	60//50 Phase	Locked-rotor Torque	114 LB-FT		
NEMA Design Code	A KVA Code	Starting Current	360 A		
Service Factor (S.F.)	1	No-load Current	11.83 A		
NEMA Nom. Eff.	93 Power Factor	Line-line Res. @ 25°C	0.106 Ω		
Rating - Duty	40C AMB-CONT	Temp. Rise @ Rated Load	56°C		
		Locked-rotor Power Factor	21		
		Rotor inertia	5.01 lb-ft ²		

Load Characteristics 380 V, 50 Hz, 40 HP

% of Rated Load	25	50	75	100	125	150
Power Factor	75	89	92	93	94	93
Efficiency	85.5	90.8	92.2	92.6	92.4	91.4
Speed	2984	2972	2960	2948	2935	2920
Line amperes	18.58	28.92	40.76	53.19	66.19	80.33

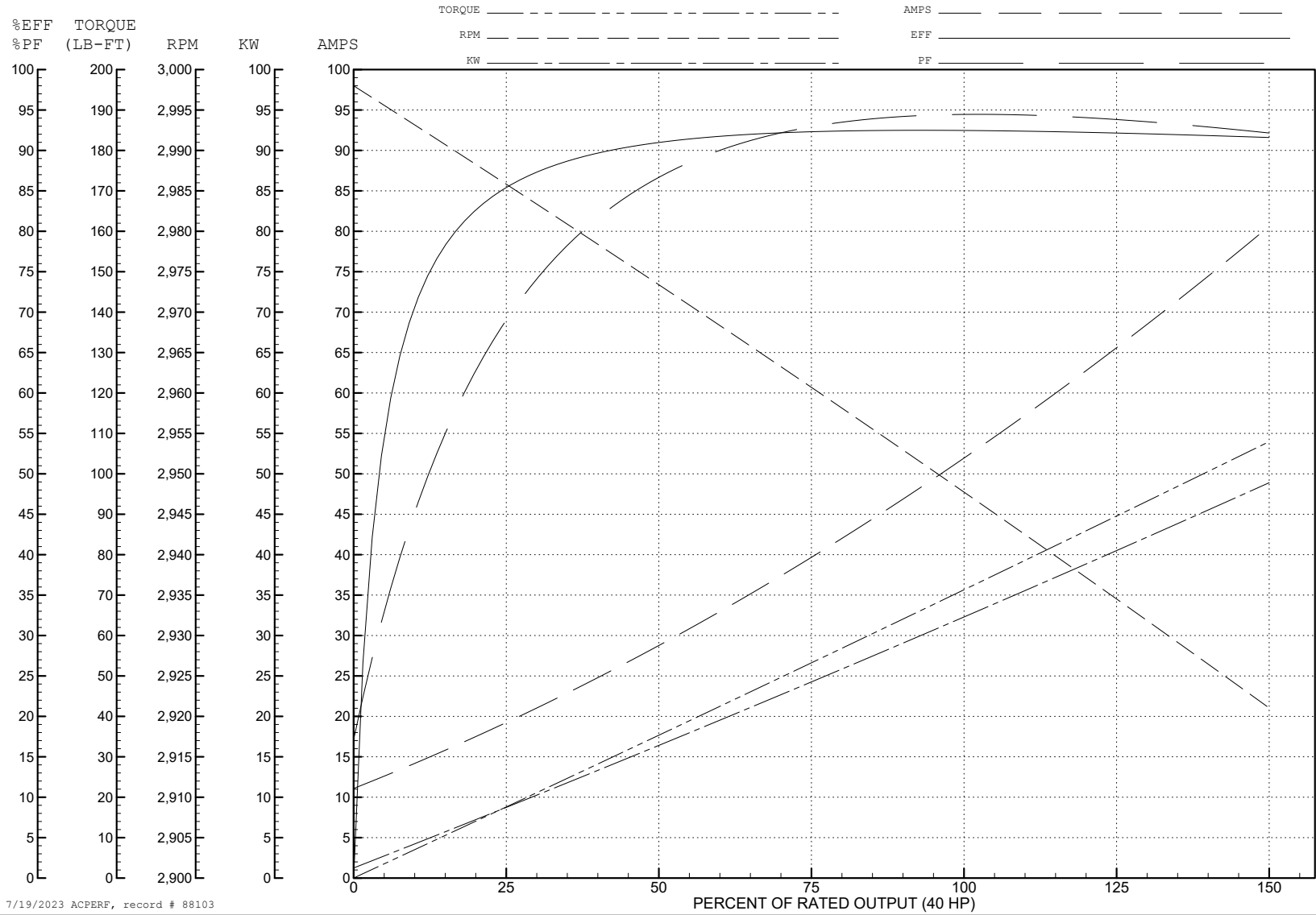
ABB Motors and Mechanical Inc.

WINDING # 12WGA0178

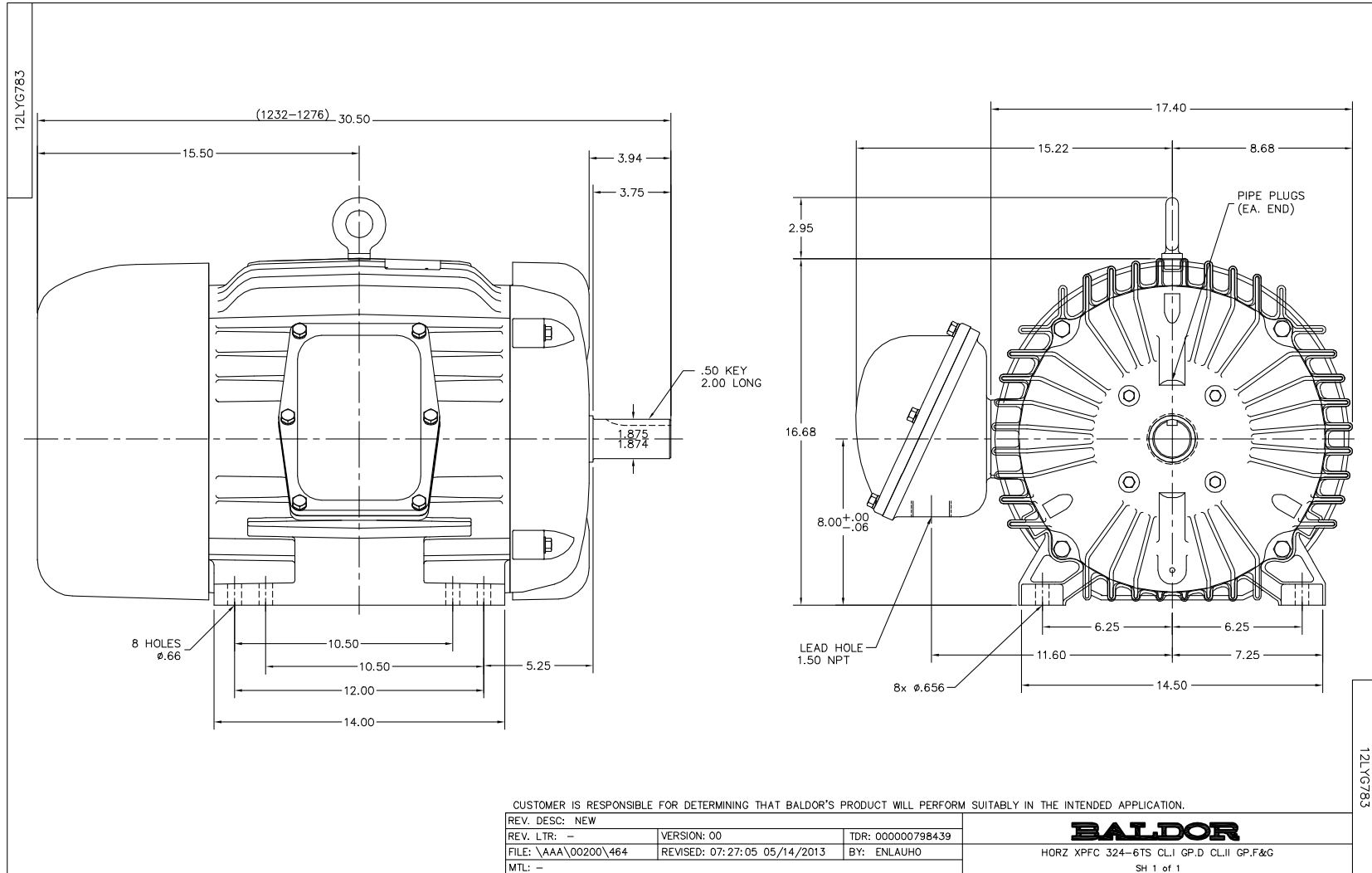
40 HP 3 PH 50 HZ 2948 RPM 380 V 1264M

Typical performance - not guaranteed values.

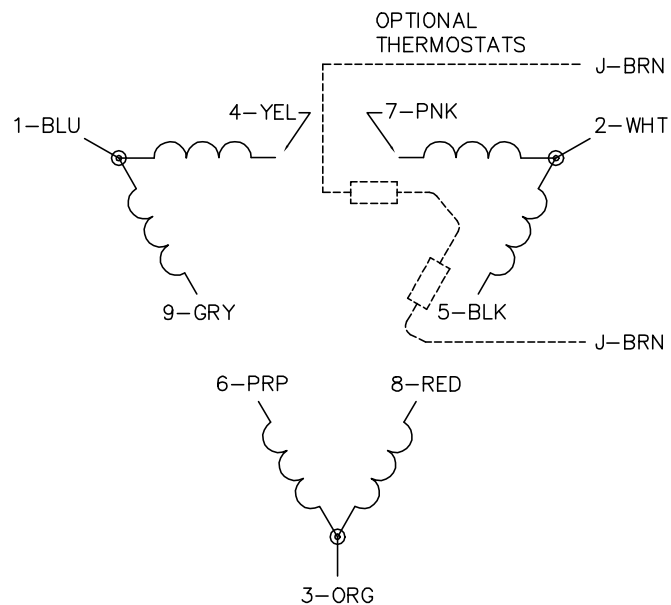
TORQUES (LB-FT): PO=264 PU=85.27 LR=114 LRA=360



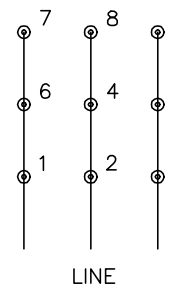
7/19/2023 ACPERF, record # 88103



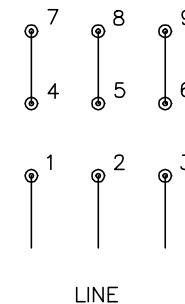
CD0180



LOW VOLTAGE
(2D)



HIGH VOLTAGE
(1D)



NOTES:

1. INTERCHANGE ANY TWO LINE LEADS TO REVERSE ROTATION.
2. OPTIONAL THERMOSTATS ARE PROVIDED WHEN SPECIFIED.
3. ACTUAL NUMBER OF INTERNAL PARALLEL CIRCUITS MAY BE A MULTIPLE OF THOSE SHOWN ABOVE.
4. LEAD COLORS ARE OPTIONAL. LEADS MUST ALWAYS BE NUMBERED AS SHOWN.

CD0180

REV. DESC: ADD CLASS CONN00000007		
REV. LTR: D	VERSION: 01	TDR: 000001099922
FILE: \AAA\00005\148	REVISED: 10: 25: 29 02/19/2019	BY: ENBRIRO
MTL: -	© □	

BALDOR - RELIANCE®

3PH, DV, 9 LEADS, DELTA CONNECTION

SH 1 of 1